

NEW PRODUCT MANUAL 产品图册

BED-软床+床垫

Feel The Dream Of Leisure In The Fashion Homelet People Feel The
Home Life Of The Time

20
/ 24

NEW PRODUCT 软床



KIMHOME



DETAILS

型号:A8620-B

规格:225*202*114

主材:蚂蚁纹进口黄牛皮 等级B

CRYSTALLIZATION OF INSPIRATION AND
CREATIVITY , IT USES A SCULPTURAL
APPEARANCE TO INTERPRET THE
CONNOTATION OF MODERN BEAUTY
WHILE MAINTAINING THE ELEMENTS OF
ERGONOMIC THEORY



DETAILS

型号:A8898

规格:233*182*108

主材:真皮 等级C

CRYSTALLIZATION OF INSPIRATION AND
CREATIVITY , IT USES A SCULPTURAL
APPEARANCE TO INTERPRET THE
CONNOTATION OF MODERN BEAUTY
WHILE MAINTAINING THE ELEMENTS OF
ERGONOMIC THEORY



型号:A8879

规格:222*220*118

主材:定制细摔纹皮, 时尚五金
高回弹定型环保海绵

CRYSTALLIZATION OF INSPIRATION AND
CREATIVITY, IT USES A SCULPTURAL
APPEARANCE TO INTERPRET THE
CONNOTATION OF MODERN BEAUTY
WHILE MAINTAINING THE ELEMENTS OF
ERGONOMIC THEORY.



DETAILS

型号:A8817

规格:223*182*98

主材:进口黄牛皮

羽绒填充内胆 等级B

CRYSTALLIZATION OF INSPIRATION AND
CREATIVITY , IT USES A SCULPTURAL
APPEARANCE TO INTERPRET THE
CONNOTATION OF MODERN BEAUTY
WHILE MAINTAINING THE ELEMENTS OF
ERGONOMIC THEORY



DETAILS

型号:A8886

规格:247*224*108

主材:真皮 等级B

CRYSTALLIZATION OF INSPIRATION AND
CREATIVITY , IT USES A SCULPTURAL
APPEARANCE TO INTERPRET THE
CONNOTATION OF MODERN BEAUTY
WHILE MAINTAINING THE ELEMENTS OF
ERGONOMIC THEORY



DETAILS

型号:A8889

规格:223*202*110

主材:头层细纹黄牛皮 **等级A**

CRYSTALLIZATION OF INSPIRATION AND
CREATIVITY , IT USES A SCULPTURAL
APPEARANCE TO INTERPRET THE
CONNOTATION OF MODERN BEAUTY
WHILE MAINTAINING THE ELEMENTS OF
ERGONOMIC THEORY



DETAILS

型号:A8891

规格:218*187*101

主材:定制细摔纹皮

CRYSTALLIZATION OF INSPIRATION AND
CREATIVITY , IT USES A SCULPTURAL
APPEARANCE TO INTERPRET THE
CONNOTATION OF MODERN BEAUTY
WHILE MAINTAINING THE ELEMENTS OF
ERGONOMIC THEORY



DETAILS

型号:A8900

规格:225*184*105

主材:纳帕真皮配压花 等级C

CRYSTALLIZATION OF INSPIRATION AND
CREATIVITY , IT USES A SCULPTURAL
APPEARANCE TO INTERPRET THE
CONNOTATION OF MODERN BEAUTY
WHILE MAINTAINING THE ELEMENTS OF
ERGONOMIC THEORY



DETAILS

型号:A8905

规格:225*192*108

主材:定制真皮
(定制头层黄牛皮)

CRYSTALLIZATION OF INSPIRATION AND
CREATIVITY , IT USES A SCULPTURAL
APPEARANCE TO INTERPRET THE
CONNOTATION OF MODERN BEAUTY
WHILE MAINTAINING THE ELEMENTS OF
ERGONOMIC THEORY



DETAILS

型号:A8911

规格:220*190*113

主材:定制真皮
(定制头层黄牛皮)

CRYSTALLIZATION OF INSPIRATION AND
CREATIVITY , IT USES A SCULPTURAL
APPEARANCE TO INTERPRET THE
CONNOTATION OF MODERN BEAUTY
WHILE MAINTAINING THE ELEMENTS OF
ERGONOMIC THEORY



DETAILS

型号:A8917

规格:229*194*100

主材:真皮 等级A

CRYSTALLIZATION OF INSPIRATION AND
CREATIVITY , IT USES A SCULPTURAL
APPEARANCE TO INTERPRET THE
CONNOTATION OF MODERN BEAUTY
WHILE MAINTAINING THE ELEMENTS OF
ERGONOMIC THEORY



DETAILS

型号:A8919

规格:228*198*116

主材:真皮 等级A

CRYSTALLIZATION OF INSPIRATION AND
CREATIVITY , IT USES A SCULPTURAL
APPEARANCE TO INTERPRET THE
CONNOTATION OF MODERN BEAUTY
WHILE MAINTAINING THE ELEMENTS OF
ERGONOMIC THEORY



DETAILS

型号:A8926

规格:222*189*113

主材:真皮 等级A

CRYSTALLIZATION OF INSPIRATION AND
CREATIVITY, IT USES A SCULPTURAL
APPEARANCE TO INTERPRET THE
CONNOTATION OF MODERN BEAUTY
WHILE MAINTAINING THE ELEMENTS OF
ERGONOMIC THEORY.



DETAILS

型号:A8931

规格:216*181*111

主材:真皮 等级A

CRYSTALLIZATION OF INSPIRATION AND
CREATIVITY , IT USES A SCULPTURAL
APPEARANCE TO INTERPRET THE
CONNOTATION OF MODERN BEAUTY
WHILE MAINTAINING THE ELEMENTS OF
ERGONOMIC THEORY



DETAILS

型号:A8933

规格:223*184*109

主材:真皮 等级A

CRYSTALLIZATION OF INSPIRATION AND
CREATIVITY , IT USES A SCULPTURAL
APPEARANCE TO INTERPRET THE
CONNOTATION OF MODERN BEAUTY
WHILE MAINTAINING THE ELEMENTS OF
ERGONOMIC THEORY



DETAILS

型号:A8935

规格:221*186*112

主材:真皮 等级A

CRYSTALLIZATION OF INSPIRATION AND
CREATIVITY , IT USES A SCULPTURAL
APPEARANCE TO INTERPRET THE
CONNOTATION OF MODERN BEAUTY
WHILE MAINTAINING THE ELEMENTS OF
ERGONOMIC THEORY



DETAILS

型号:A8938

规格:221*185*116

主材:真皮 等级B

CRYSTALLIZATION OF INSPIRATION AND
CREATIVITY , IT USES A SCULPTURAL
APPEARANCE TO INTERPRET THE
CONNOTATION OF MODERN BEAUTY
WHILE MAINTAINING THE ELEMENTS OF
ERGONOMIC THEORY



DETAILS

型号:A8939

规格:234*200*113

主材:定制真皮

(定制头层黄牛皮)

CRYSTALLIZATION OF INSPIRATION AND
CREATIVITY , IT USES A SCULPTURAL
APPEARANCE TO INTERPRET THE
CONNOTATION OF MODERN BEAUTY
WHILE MAINTAINING THE ELEMENTS OF
ERGONOMIC THEORY



DETAILS

型号:A8950

规格:216*182*111

主材:真皮 等级A

CRYSTALLIZATION OF INSPIRATION AND
CREATIVITY , IT USES A SCULPTURAL
APPEARANCE TO INTERPRET THE
CONNOTATION OF MODERN BEAUTY
WHILE MAINTAINING THE ELEMENTS OF
ERGONOMIC THEORY



DETAILS

型号:A8951

规格:215*184*114

主材:定制皮
(定制头层黄牛皮)

CRYSTALLIZATION OF INSPIRATION AND
CREATIVITY , IT USES A SCULPTURAL
APPEARANCE TO INTERPRET THE
CONNOTATION OF MODERN BEAUTY
WHILE MAINTAINING THE ELEMENTS OF
ERGONOMIC THEORY



DETAILS

型号:A8952

规格:224*193*117

主材:真皮 等级C

CRYSTALLIZATION OF INSPIRATION AND
CREATIVITY , IT USES A SCULPTURAL
APPEARANCE TO INTERPRET THE
CONNOTATION OF MODERN BEAUTY
WHILE MAINTAINING THE ELEMENTS OF
ERGONOMIC THEORY



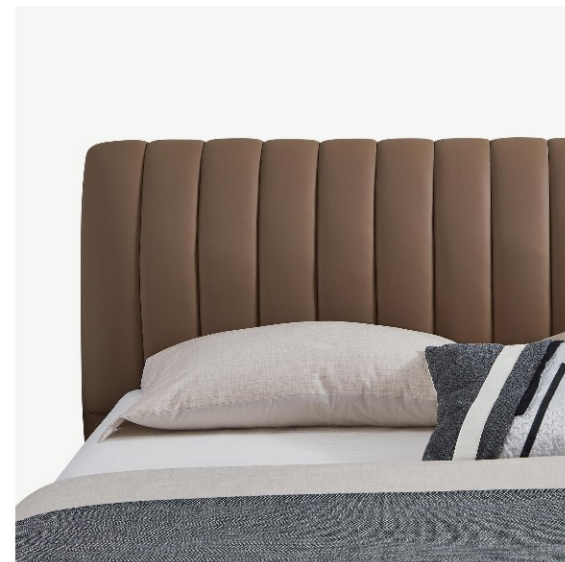
DETAILS

型号:A8956

规格:226*196*105

主材:真皮 等级C

CRYSTALLIZATION OF INSPIRATION AND
CREATIVITY, IT USES A SCULPTURAL
APPEARANCE TO INTERPRET THE
CONNOTATION OF MODERN BEAUTY
WHILE MAINTAINING THE ELEMENTS OF
ERGONOMIC THEORY.



DETAILS

型号:A8958

规格:233*201*111

主材:真皮 等级C

CRYSTALLIZATION OF INSPIRATION AND
CREATIVITY , IT USES A SCULPTURAL
APPEARANCE TO INTERPRET THE
CONNOTATION OF MODERN BEAUTY
WHILE MAINTAINING THE ELEMENTS OF
ERGONOMIC THEORY



DETAILS

型号:A8960

规格:235*212*113

主材:真皮 等级B

CRYSTALLIZATION OF INSPIRATION AND
CREATIVITY, IT USES A SCULPTURAL
APPEARANCE TO INTERPRET THE
CONNOTATION OF MODERN BEAUTY
WHILE MAINTAINING THE ELEMENTS OF
ERGONOMIC THEORY.



DETAILS

型号:A8961

规格:234*195*115

主材:真皮 等级C

CRYSTALLIZATION OF INSPIRATION AND
CREATIVITY , IT USES A SCULPTURAL
APPEARANCE TO INTERPRET THE
CONNOTATION OF MODERN BEAUTY
WHILE MAINTAINING THE ELEMENTS OF
ERGONOMIC THEORY



DETAILS

型号:A8965

规格:226*195*101

主材:真皮 等级C

CRYSTALLIZATION OF INSPIRATION AND
CREATIVITY, IT USES A SCULPTURAL
APPEARANCE TO INTERPRET THE
CONNOTATION OF MODERN BEAUTY
WHILE MAINTAINING THE ELEMENTS OF
ERGONOMIC THEORY.



DETAILS

型号:劳伦斯

规格:225*242*118

主材:真皮 等级B

CRYSTALLIZATION OF INSPIRATION AND
CREATIVITY , IT USES A SCULPTURAL
APPEARANCE TO INTERPRET THE
CONNOTATION OF MODERN BEAUTY
WHILE MAINTAINING THE ELEMENTS OF
ERGONOMIC THEORY



DETAILS

型号:香奈尔墨绿

规格:230*210*108

主材:真皮 等级A

CRYSTALLIZATION OF INSPIRATION AND
CREATIVITY , IT USES A SCULPTURAL
APPEARANCE TO INTERPRET THE
CONNOTATION OF MODERN BEAUTY
WHILE MAINTAINING THE ELEMENTS OF
ERGONOMIC THEORY.



DETAILS

型号:迪兰

规格:229*192*88

主材:真皮 等级C

CRYSTALLIZATION OF INSPIRATION AND
CREATIVITY, IT USES A SCULPTURAL
APPEARANCE TO INTERPRET THE
CONNOTATION OF MODERN BEAUTY
WHILE MAINTAINING THE ELEMENTS OF
ERGONOMIC THEORY.



DETAILS

型号:KH562

规格:228*182*108

主材:科技布面料 等级A
定型海绵加环保棉

CRYSTALLIZATION OF INSPIRATION AND
CREATIVITY , IT USES A SCULPTURAL
APPEARANCE TO INTERPRET THE
CONNOTATION OF MODERN BEAUTY
WHILE MAINTAINING THE ELEMENTS OF
ERGONOMIC THEORY



DETAILS

型号:KH2038

规格:240*233*92

主材:高端麂皮绒面料 等级E

CRYSTALLIZATION OF INSPIRATION AND
CREATIVITY , IT USES A SCULPTURAL
APPEARANCE TO INTERPRET THE
CONNOTATION OF MODERN BEAUTY
WHILE MAINTAINING THE ELEMENTS OF
ERGONOMIC THEORY



DETAILS

型号:KH2065

规格:228*197*115

主材:免洗科技布 (等级A)

高回弹环保定型海绵

环保AAAA级无胶棉

CRYSTALLIZATION OF INSPIRATION AND
CREATIVITY , IT USES A SCULPTURAL
APPEARANCE TO INTERPRET THE
CONNOTATION OF MODERN BEAUTY
WHILE MAINTAINING THE ELEMENTS OF
ERGONOMIC THEORY



DETAILS

型号:KH2083

规格:225*193*112

主材:科技布 等级A

CRYSTALLIZATION OF INSPIRATION AND
CREATIVITY , IT USES A SCULPTURAL
APPEARANCE TO INTERPRET THE
CONNOTATION OF MODERN BEAUTY
WHILE MAINTAINING THE ELEMENTS OF
ERGONOMIC THEORY



DETAILS

型号:KH2090

规格:235*215*113

主材:猫爪布 等级B

CRYSTALLIZATION OF INSPIRATION AND
CREATIVITY , IT USES A SCULPTURAL
APPEARANCE TO INTERPRET THE
CONNOTATION OF MODERN BEAUTY
WHILE MAINTAINING THE ELEMENTS OF
ERGONOMIC THEORY



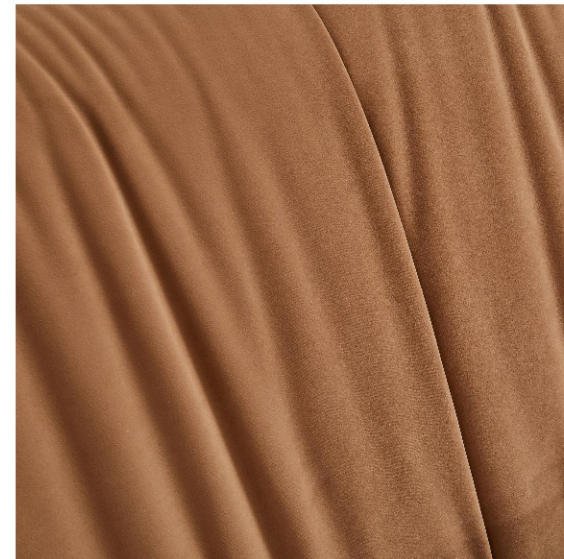
DETAILS

型号:KH2101

规格:226*194*111

主材:猫爪布

CRYSTALLIZATION OF INSPIRATION AND
CREATIVITY , IT USES A SCULPTURAL
APPEARANCE TO INTERPRET THE
CONNOTATION OF MODERN BEAUTY
WHILE MAINTAINING THE ELEMENTS OF
ERGONOMIC THEORY



DETAILS

型号:KH2109

规格:226*195*101

主材:牛奶绒 等级C

CRYSTALLIZATION OF INSPIRATION AND
CREATIVITY , IT USES A SCULPTURAL
APPEARANCE TO INTERPRET THE
CONNOTATION OF MODERN BEAUTY
WHILE MAINTAINING THE ELEMENTS OF
ERGONOMIC THEORY



DETAILS

型号:KH2110

规格:218*186*100

主材:海豚绒 等级B

CRYSTALLIZATION OF INSPIRATION AND
CREATIVITY , IT USES A SCULPTURAL
APPEARANCE TO INTERPRET THE
CONNOTATION OF MODERN BEAUTY
WHILE MAINTAINING THE ELEMENTS OF
ERGONOMIC THEORY



DETAILS

型号:KH2115

规格:231*185*101

主材:海豚绒 等级B

CRYSTALLIZATION OF INSPIRATION AND
CREATIVITY , IT USES A SCULPTURAL
APPEARANCE TO INTERPRET THE
CONNOTATION OF MODERN BEAUTY
WHILE MAINTAINING THE ELEMENTS OF
ERGONOMIC THEORY



DETAILS

型号:KH2121

规格:223*195*115

主材:海豚绒 等级B

CRYSTALLIZATION OF INSPIRATION AND
CREATIVITY , IT USES A SCULPTURAL
APPEARANCE TO INTERPRET THE
CONNOTATION OF MODERN BEAUTY
WHILE MAINTAINING THE ELEMENTS OF
ERGONOMIC THEORY.



DETAILS

型号:KH2122

规格:219*188*113

主材:猫爪布

CRYSTALLIZATION OF INSPIRATION AND
CREATIVITY , IT USES A SCULPTURAL
APPEARANCE TO INTERPRET THE
CONNOTATION OF MODERN BEAUTY
WHILE MAINTAINING THE ELEMENTS OF
ERGONOMIC THEORY



DETAILS

型号:KH2123

规格:220*194*114

主材:海豚绒 等级B

CRYSTALLIZATION OF INSPIRATION AND
CREATIVITY, IT USES A SCULPTURAL
APPEARANCE TO INTERPRET THE
CONNOTATION OF MODERN BEAUTY
WHILE MAINTAINING THE ELEMENTS OF
ERGONOMIC THEORY.



DETAILS

型号:KH2126-B

规格:216*181*111

主材:悬浮床

科技绒 等级B

CRYSTALLIZATION OF INSPIRATION AND
CREATIVITY , IT USES A SCULPTURAL
APPEARANCE TO INTERPRET THE
CONNOTATION OF MODERN BEAUTY
WHILE MAINTAINING THE ELEMENTS OF
ERGONOMIC THEORY



DETAILS

型号:KH2127

规格:215*188*112

主材:科技布 等级A

CRYSTALLIZATION OF INSPIRATION AND
CREATIVITY , IT USES A SCULPTURAL
APPEARANCE TO INTERPRET THE
CONNOTATION OF MODERN BEAUTY
WHILE MAINTAINING THE ELEMENTS OF
ERGONOMIC THEORY.



DETAILS

型号:KH2131

规格:225*206*115

主材:棉麻 等级C

CRYSTALLIZATION OF INSPIRATION AND
CREATIVITY , IT USES A SCULPTURAL
APPEARANCE TO INTERPRET THE
CONNOTATION OF MODERN BEAUTY
WHILE MAINTAINING THE ELEMENTS OF
ERGONOMIC THEORY



DETAILS

型号:KH2132

规格:226*240*116

主材:提花棉麻

生态真皮

等级E

CRYSTALLIZATION OF INSPIRATION AND
CREATIVITY , IT USES A SCULPTURAL
APPEARANCE TO INTERPRET THE
CONNOTATION OF MODERN BEAUTY
WHILE MAINTAINING THE ELEMENTS OF
ERGONOMIC THEORY



DETAILS

型号:KH2133

规格:248*199*100

主材:棉麻配生态皮 等级C

CRYSTALLIZATION OF INSPIRATION AND
CREATIVITY , IT USES A SCULPTURAL
APPEARANCE TO INTERPRET THE
CONNOTATION OF MODERN BEAUTY
WHILE MAINTAINING THE ELEMENTS OF
ERGONOMIC THEORY



DETAILS

型号:KH2135

规格:244*198*115

主材:针织压花面料 等级D

配生态皮 等级C

CRYSTALLIZATION OF INSPIRATION AND
CREATIVITY , IT USES A SCULPTURAL
APPEARANCE TO INTERPRET THE
CONNOTATION OF MODERN BEAUTY
WHILE MAINTAINING THE ELEMENTS OF
ERGONOMIC THEORY.



DETAILS

型号：软床A8966

床头柜B23-12

规格：软床223*195*115

床头柜50*40*50

无结松实木排171.5*196

主材：接触面头层牛皮，床头实木+实木多层板，
床边无结松实木边，床背+床侧PU皮

皮类：等级A

CRYSTALLIZATION OF INSPIRATION AND
CREATIVITY ,IT USES A SCULPTURAL
APPEARANCE TO INTERPRET THE
CONNOTATION OF MODERN BEAUTY
WHILE MAINTAINING THE ELEMENTS OF
ERGONOMIC THEORY



DETAILS

型号: 软床A8967

床头柜B23-10

规格: 软床213*184*106

床头柜50*40*50

无结松实木排167*194

主材: 双色复古风头层牛皮、悬浮灯带、
床头实木+实木多层板，白蜡木床边
高回弹定型环保海眠

皮类: 等级D

CRYSTALLIZATION OF INSPIRATION AND
CREATIVITY , IT USES A SCULPTURAL
APPEARANCE TO INTERPRET THE
CONNOTATION OF MODERN BEAUTY
WHILE MAINTAINING THE ELEMENTS OF
ERGONOMIC THEORY



DETAILS

型号: 软床A8968

床头柜B23-20

规格: 软床228*190*115

床头柜50*40*48

静音床板162*190

主材: 床头和床边, 实木+实木多层板,

摔纹真皮, 床背+床侧PU皮, 羽绒填充

皮类: 等级A

CRYSTALLIZATION OF INSPIRATION AND
CREATIVITY...IT USES A SCULPTURAL
APPEARANCE TO INTERPRET THE
CONNOTATION OF MODERN BEAUTY.
WHILE MAINTAINING THE ELEMENTS OF
ERGONOMIC THEORY.



DETAILS

型号: 软床A8976

床头柜B23-21

规格: 软床230*200*110

床头柜50*40*50

静音床板162*190

主材: 床头和床边, 实木+实木多层板,
接触面头层牛皮, 床背+床侧PU皮,
高回弹定型环保海绵, 羽绒填充

皮类: 等级A

CRYSTALLIZATION OF INSPIRATION AND
CREATIVITY , IT USES A SCULPTURAL
APPEARANCE TO INTERPRET THE
CONNOTATION OF MODERN BEAUTY
WHILE MAINTAINING THE ELEMENTS OF
ERGONOMIC THEORY



DETAILS

型号: 软床A8970

床头柜B23-35

规格: 软床242*220*112

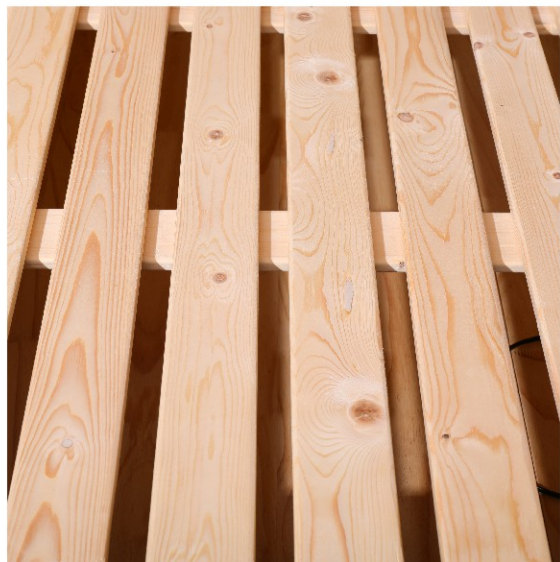
床头柜50*40*48

无结松实木排1.8*2.0

主材: 接触面头层牛皮, 床头和床边,
实木+实木多层板, 床背+床侧PU皮,
高回弹定型环保海绵

皮类: 等级A

CRYSTALLIZATION OF INSPIRATION AND
CREATIVITY...IT USES A SCULPTURAL
APPEARANCE TO INTERPRET THE
CONNOTATION OF MODERN BEAUTY.
WHILE MAINTAINING THE ELEMENTS OF
ERGONOMIC THEORY.



DETAILS

型号: 软床A8971

床头柜B23-1

规格: 软床221*181*111

床头柜55*52

无结松实木排164*192

主材: 床头和床边, 实木+实木多层板,
中厚摔纹皮, 床背+床侧PU皮,
电动平行启动杆

皮类: 等级B

CRYSTALLIZATION OF INSPIRATION AND
CREATIVITY , IT USES A SCULPTURAL
APPEARANCE TO INTERPRET THE
CONNOTATION OF MODERN BEAUTY
WHILE MAINTAINING THE ELEMENTS OF
ERGONOMIC THEORY



DETAILS

型号: 软床A8969

床头柜B23-36

规格: 软床243*202*104

床头柜50*40*48

无结松排骨架1.8*2.0

主材: 摔纹真皮, 羽绒填充

床头和床边, 实木+实木多层板,

床背+床侧PU皮, 高回弹定型环保海绵

皮类: 等级A

CRYSTALLIZATION OF INSPIRATION AND
CREATIVITY , IT USES A SCULPTURAL
APPEARANCE TO INTERPRET THE
CONNOTATION OF MODERN BEAUTY
WHILE MAINTAINING THE ELEMENTS OF
ERGONOMIC THEORY



DETAILS

型号: 软床A8979

床头柜B23-10

规格: 软床225*206*119

床头柜50*40*50

静音床板162*190

主材: 接触面头层牛皮, 床头和床边,
实木+实木多层板, 床背+床侧PU皮,
高回弹定型环保海绵

CRYSTALLIZATION OF INSPIRATION AND
CREATIVITY , IT USES A SCULPTURAL
APPEARANCE TO INTERPRET THE
CONNOTATION OF MODERN BEAUTY
WHILE MAINTAINING THE ELEMENTS OF
ERGONOMIC THEORY



DETAILS

型号: 软床KH2150

床头柜B21-51

规格: 软床240*202*83

床头柜50*50*50

无结松排骨架1.8*2.0

主材: 接触面雪尼尔面料,

床头和床边, 实木+实木多层板,

高回弹定型环保海绵 床背+床侧雪尼尔面料,

皮类: 等级C

CRYSTALLIZATION OF INSPIRATION AND
CREATIVITY , IT USES A SCULPTURAL
APPEARANCE TO INTERPRET THE
CONNOTATION OF MODERN BEAUTY
WHILE MAINTAINING THE ELEMENTS OF
ERGONOMIC THEORY



DETAILS

型号: 软床大黑牛

床头柜B23-2

规格: 软床235*195*88

床头柜50*40*50

静音床板181*201

主材: 接触面头层黄牛皮, 床头和床边,
实木+实木多层板, 床背+床侧PU皮,
高回弹定型环保海绵

CRYSTALLIZATION OF INSPIRATION AND
CREATIVITY , IT USES A SCULPTURAL
APPEARANCE TO INTERPRET THE
CONNOTATION OF MODERN BEAUTY
WHILE MAINTAINING THE ELEMENTS OF
ERGONOMIC THEORY



DETAILS

型号: 软床A8935

床头柜B21-37

规格: 软床221*186*112

床头柜50*40*50

静音床板162*190

主材: 高回弹定型环保海绵

接触面头层牛皮, 床头和床边,

实木+实木多层板, 床背+床侧PU皮,

等级: A

CRYSTALLIZATION OF INSPIRATION AND
CREATIVITY ,IT USES A SCULPTURAL
APPEARANCE TO INTERPRET THE
CONNOTATION OF MODERN BEAUTY
WHILE MAINTAINING THE ELEMENTS OF
ERGONOMIC THEORY



DETAILS

型号: 软床A8981

床头柜B23-2

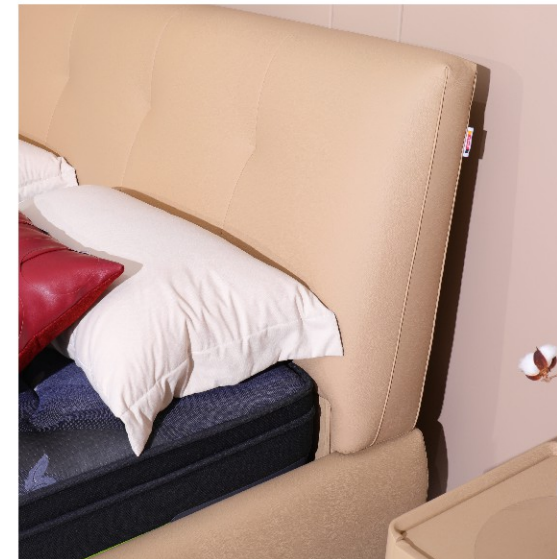
规格: 软床223*182*108

床头柜50*40*50

实木排1.3*1.9

主材: 全实木气动床，接触面头层牛皮，
床头和床边，实木+实木多层板，
床背+床侧PU皮，高回弹定型环保海绵

CRYSTALLIZATION OF INSPIRATION AND
CREATIVITY , IT USES A SCULPTURAL
APPEARANCE TO INTERPRET THE
CONNOTATION OF MODERN BEAUTY
WHILE MAINTAINING THE ELEMENTS OF
ERGONOMIC THEORY



DETAILS

型号: 软床KH2136

床头柜B23-26

规格: 软床236*199*105

床头柜50*40*50

无结松排骨架1.8*2.0

主材: 接触面生态皮，床头和床边，
实木+实木多层板，床背+床侧生态皮面料，
高回弹定型环保海绵

CRYSTALLIZATION OF INSPIRATION AND
CREATIVITY ,IT USES A SCULPTURAL
APPEARANCE TO INTERPRET THE
CONNOTATION OF MODERN BEAUTY
WHILE MAINTAINING THE ELEMENTS OF
ERGONOMIC THEORY



DETAILS

型号: 软床KH2137

床头柜B23-36

规格: 软床242*195*97

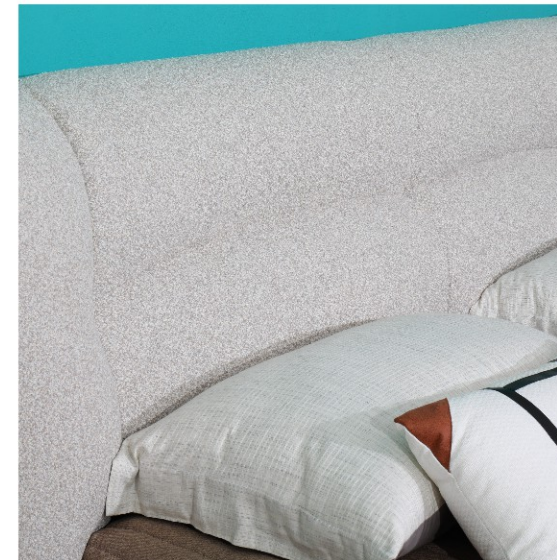
床头柜50*40*48

无结松排骨架1.8*2.0

主材: 接触面猫爪布+麻布，床头和床边，
实木+实木多层板，床背+床侧猫爪布面料，
高回弹定型环保海绵

等级: E

CRYSTALLIZATION OF INSPIRATION AND
CREATIVITY , IT USES A SCULPTURAL
APPEARANCE TO INTERPRET THE
CONNOTATION OF MODERN BEAUTY
WHILE MAINTAINING THE ELEMENTS OF
ERGONOMIC THEORY



DETAILS

型号: 软床KH2139

床头柜B23-7

规格: 软床245*222*106

床头柜50*40*50

无结松排骨架1.8*2.0

主材: 接触面棉麻面料，床头和床边，
实木+实木多层板，床背+床侧棉麻面料，
高回弹定型环保海绵

等级: A

CRYSTALLIZATION OF INSPIRATION AND
CREATIVITY...IT USES A SCULPTURAL
APPEARANCE TO INTERPRET THE
CONNOTATION OF MODERN BEAUTY.
WHILE MAINTAINING THE ELEMENTS OF
ERGONOMIC THEORY.



DETAILS

型号: 软床KH2152

床头柜B21-37

规格: 软床225*194*104

床头柜50*40*50

主材: 静音床板162*190

主材: 接触面生态皮，床头和床边，
实木+实木多层板，床背+床侧PU皮，
高回弹定型环保海绵

等级: A

CRYSTALLIZATION OF INSPIRATION AND
CREATIVITY , IT USES A SCULPTURAL
APPEARANCE TO INTERPRET THE
CONNOTATION OF MODERN BEAUTY
WHILE MAINTAINING THE ELEMENTS OF
ERGONOMIC THEORY



DETAILS

型号: 蓝精灵

床头柜B23-23

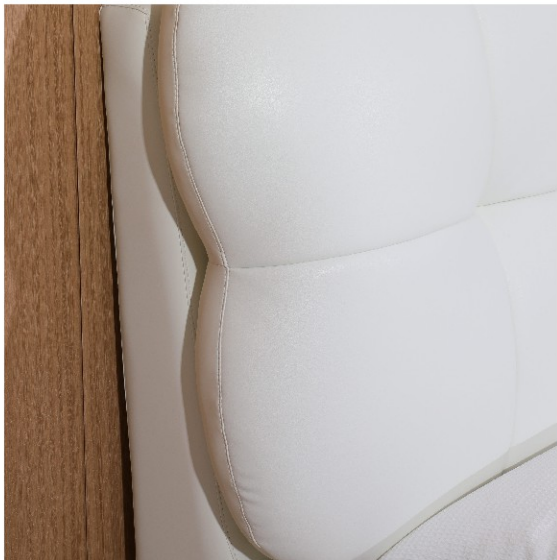
规格: 软床215*167*120

床头柜45*40*47

钢木排1.32*2.0

主材: 接触面有机硅生态皮，床头、床侧，
实木+实木多层板，床背+床侧PU皮，
高回弹环保定型海绵

CRYSTALLIZATION OF INSPIRATION AND
CREATIVITY , IT USES A SCULPTURAL
APPEARANCE TO INTERPRET THE
CONNOTATION OF MODERN BEAUTY
WHILE MAINTAINING THE ELEMENTS OF
ERGONOMIC THEORY



DETAILS

型号: 泡芙儿童床

床头柜86#

规格: 软床221*165*118

床头柜50*40.5*40.5

钢木排1.32*1.9

主材: 接触面有机硅生态皮, 床头、床侧,
实木+实木多层板, 床背+床侧PU皮,
高回弹环保定型海绵

CRYSTALLIZATION OF INSPIRATION AND
CREATIVITY , IT USES A SCULPTURAL
APPEARANCE TO INTERPRET THE
CONNOTATION OF MODERN BEAUTY
WHILE MAINTAINING THE ELEMENTS OF
ERGONOMIC THEORY



DETAILS

型号: 软床A8973

床头柜B23-18

规格: 软床223*195*114

床头柜50*40*48

静音床板163*191

主材: 接触面头层牛皮，床头和床边，
实木+实木多层板，床背+床侧PU皮
高回弹定型环保海绵

CRYSTALLIZATION OF INSPIRATION AND
CREATIVITY ,IT USES A SCULPTURAL
APPEARANCE TO INTERPRET THE
CONNOTATION OF MODERN BEAUTY.
WHILE MAINTAINING THE ELEMENTS OF
ERGONOMIC THEORY



DETAILS

型号: 软床A8977

床头柜B21-20

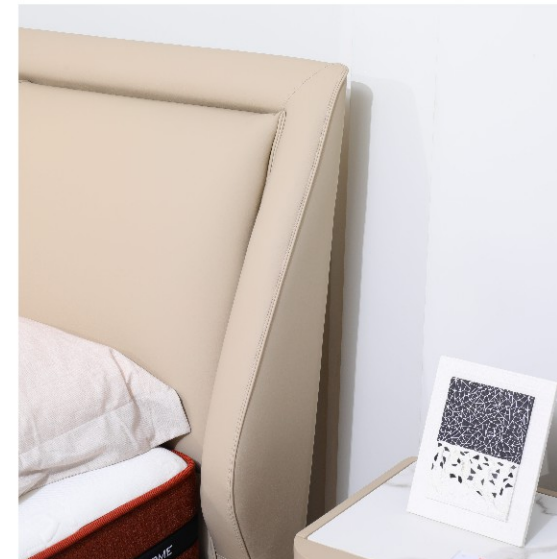
规格: 软床231*198*118

床头柜50*40*48

无结松排骨架1.8*2.0

主材: 接触面头层牛皮, 床头和床边,
实木+实木多层板, 床背+床侧PU皮,
高回弹定型环保海绵, 床头按摩功能

CRYSTALLIZATION OF INSPIRATION AND
CREATIVITY , IT USES A SCULPTURAL
APPEARANCE TO INTERPRET THE
CONNOTATION OF MODERN BEAUTY
WHILE MAINTAINING THE ELEMENTS OF
ERGONOMIC THEORY



DETAILS

型号: 软床A8980

床头柜B23-36

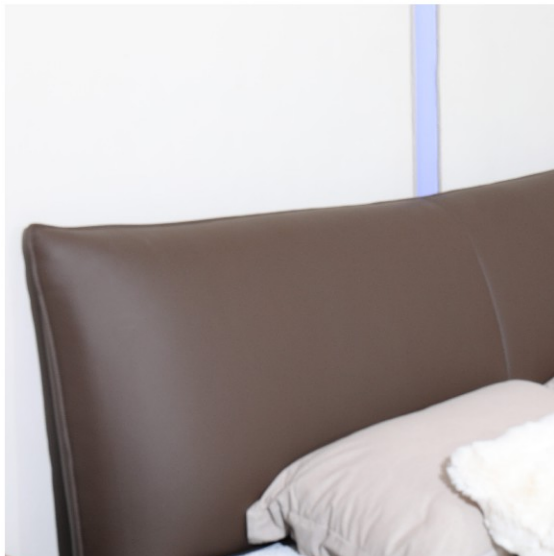
规格: 软床233*197*110

床头柜50*40*48

钢木排骨架180*200

主材: 普通汽动床，四边内侧实木，实木底板，
接触面头层牛皮，床头和床边，实木+
实木多层板，床背+床侧PU皮，
高回弹定型环保海绵

CRYSTALLIZATION OF INSPIRATION AND
CREATIVITY ,IT USES A SCULPTURAL
APPEARANCE TO INTERPRET THE
CONNOTATION OF MODERN BEAUTY.
WHILE MAINTAINING THE ELEMENTS OF
ERGONOMIC THEORY.



DETAILS

型号: A8982

床头柜M8019

规格: 软床217*195*107

床头柜500*400*480

无结松实木排167*194

主材: 悬浮床，接触面头层牛皮，床头实木+
实木多层板，床背PU皮，高回弹定型
环保海绵，无结松实木排，白蜡木床边

CRYSTALLIZATION OF INSPIRATION AND
CREATIVITY , IT USES A SCULPTURAL
APPEARANCE TO INTERPRET THE
CONNOTATION OF MODERN BEAUTY
WHILE MAINTAINING THE ELEMENTS OF
ERGONOMIC THEORY

NEW PRODUCT 床垫



KIMHOME



DETAILS

型号:山宁泰

厚度:23(适中偏硬)

主材:瑞士山宁泰抗菌防螨面料
恒温记忆棉, 原生态竹纤维
静音独立袋弹簧
四周海棉加固封边工艺

CRYSTALLIZATION OF INSPIRATION AND
CREATIVITY , IT USES A SCULPTURAL
APPEARANCE TO INTERPRET THE
CONNOTATION OF MODERN BEAUTY
WHILE MAINTAINING THE ELEMENTS OF
ERGONOMIC THEORY



DETAILS

型号:美梦一号

厚度:24(适中)

主材:三防针织面料+天然乳胶

高温抗菌定型棉

抗干扰独立袋弹簧

CRYSTALLIZATION OF INSPIRATION AND
CREATIVITY , IT USES A SCULPTURAL
APPEARANCE TO INTERPRET THE
CONNOTATION OF MODERN BEAUTY
WHILE MAINTAINING THE ELEMENTS OF
ERGONOMIC THEORY



DETAILS

型号:清爽

厚度:24(适中)

主材:康菲特清新空气面料

3D 透气舒适层+静音独立袋弹簧

四周海棉加固封边工艺

面拆款

CRYSTALLIZATION OF INSPIRATION AND
CREATIVITY , IT USES A SCULPTURAL
APPEARANCE TO INTERPRET THE
CONNOTATION OF MODERN BEAUTY
WHILE MAINTAINING THE ELEMENTS OF
ERGONOMIC THEORY



DETAILS

型号:益生菌

厚度:22(适中)

主材:进口康菲特益生菌抗过敏面料

3 D透气面料 +天然乳胶

高碳锰钢大芯邦尼尔弹簧

CRYSTALLIZATION OF INSPIRATION AND
CREATIVITY , IT USES A SCULPTURAL
APPEARANCE TO INTERPRET THE
CONNOTATION OF MODERN BEAUTY
WHILE MAINTAINING THE ELEMENTS OF
ERGONOMIC THEORY



DETAILS

型号:乐梦

厚度:22(偏硬)

主材:抗起球天丝面料+500克蓬松纤棉

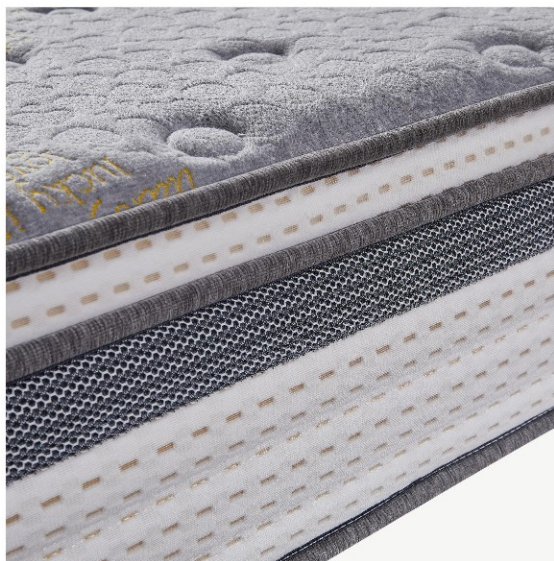
2公分高回弹海绵+2公分3E环保棕

2.3线高碳锰钢大芯邦尼尔床网

平衡耐磨环保棉+四周海绵封边工艺

底部采用透气3D网格布

CRYSTALLIZATION OF INSPIRATION AND
CREATIVITY , IT USES A SCULPTURAL
APPEARANCE TO INTERPRET THE
CONNOTATION OF MODERN BEAUTY
WHILE MAINTAINING THE ELEMENTS OF
ERGONOMIC THEORY



DETAILS

型号:如虎1号

厚度:28(硬)

主材:爱心提花针织面料+3分护脊棉
2分有氧纤维棉+静音独立袋弹簧
四周海棉加固封边工艺

CRYSTALLIZATION OF INSPIRATION AND
CREATIVITY , IT USES A SCULPTURAL
APPEARANCE TO INTERPRET THE
CONNOTATION OF MODERN BEAUTY
WHILE MAINTAINING THE ELEMENTS OF
ERGONOMIC THEORY



DETAILS

型号:奥格斯堡

厚度:23(适中)

主材:彩棉面料+天然乳胶

平衡耐磨环保棉

高碳锰钢大芯邦尼尔弹簧

CRYSTALLIZATION OF INSPIRATION AND
CREATIVITY , IT USES A SCULPTURAL
APPEARANCE TO INTERPRET THE
CONJUGATION OF MODERN BEAUTY
WHILE MAINTAINING THE ELEMENTS OF
ERGONOMIC THEORY



DETAILS

型号:爱丁堡

厚度:26(中软)

主材:羊绒面料+4分乳胶

五区静音独立袋弹簧

四周海棉加固封边工艺

CRYSTALLIZATION OF INSPIRATION AND
CREATIVITY , IT USES A SCULPTURAL
APPEARANCE TO INTERPRET THE
CONNOTATION OF MODERN BEAUTY
WHILE MAINTAINING THE ELEMENTS OF
ERGONOMIC THEORY



DETAILS

型号:优眠

厚度:23(偏硬)

**主材:亲肤针织面料+3E环保棕
高碳锰钢大芯邦尼尔弹簧**

CRYSTALLIZATION OF INSPIRATION AND
CREATIVITY , IT USES A SCULPTURAL
APPEARANCE TO INTERPRET THE
CONNOTATION OF MODERN BEAUTY
WHILE MAINTAINING THE ELEMENTS OF
ERGONOMIC THEORY



DETAILS

型号:诺伊斯

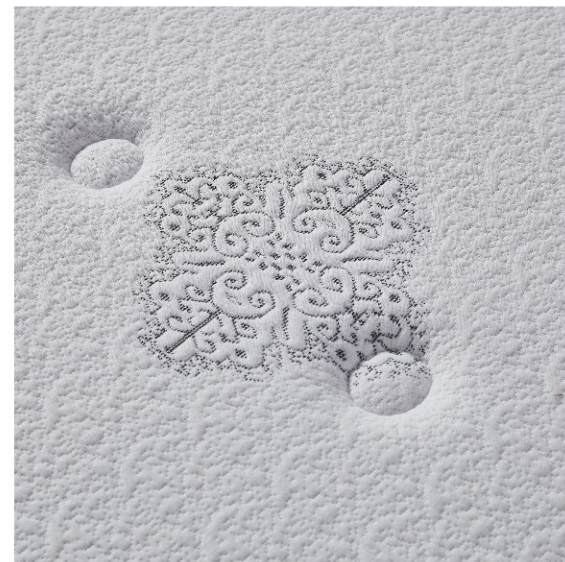
厚度:24(可调,软硬适中)

主材:纯天然羊绒面料+天然乳胶

3D+ 五区静音独立袋弹簧

四周海棉加固封边工艺

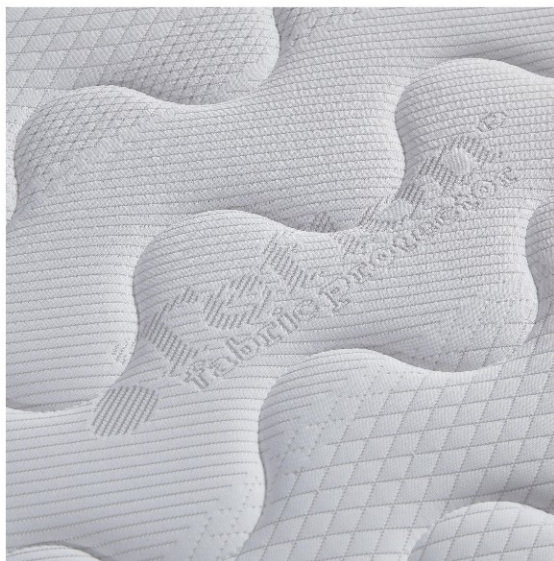
CRYSTALLIZATION OF INSPIRATION AND
CREATIVITY , IT USES A SCULPTURAL
APPEARANCE TO INTERPRET THE
CONNOTATION OF MODERN BEAUTY
WHILE MAINTAINING THE ELEMENTS OF
ERGONOMIC THEORY



DETAILS

型号:雷诺
厚度:22(适中)
主材:高档针织面料
天然乳胶
抗干扰独立袋弹簧

CRYSTALLIZATION OF INSPIRATION AND
CREATIVITY , IT USES A SCULPTURAL
APPEARANCE TO INTERPRET THE
CONNOTATION OF MODERN BEAUTY
WHILE MAINTAINING THE ELEMENTS OF
ERGONOMIC THEORY



DETAILS

型号:达琳

厚度:23(可调, 软硬适中)

主材:三防抗起球针织面料 + 高回弹海绵

2 公分3D+2.3 线高碳锰钢大芯

邦尼尔弹簧+四周海绵封边工艺

底部采用透气3D网格布

CRYSTALLIZATION OF INSPIRATION AND
CREATIVITY , IT USES A SCULPTURAL
APPEARANCE TO INTERPRET THE
CONNOTATION OF MODERN BEAUTY
WHILE MAINTAINING THE ELEMENTS OF
ERGONOMIC THEORY



DETAILS

型号:欧宝

厚度:21(适中)

主材:羊绒针织面料+3D透气面料

天然乳胶+五区独立袋床网

两边卷包款

CRYSTALLIZATION OF INSPIRATION AND
CREATIVITY , IT USES A SCULPTURAL
APPEARANCE TO INTERPRET THE
CONNOTATION OF MODERN BEAUTY
WHILE MAINTAINING THE ELEMENTS OF
ERGONOMIC THEORY



DETAILS

型号:迪丽雅

厚度:23(适中偏硬)

主材:全棉针织面料+泰国进口乳胶

3E 环保棕+高碳锰钢大芯

邦尼尔弹簧+面拆

CRYSTALLIZATION OF INSPIRATION AND
CREATIVITY , IT USES A SCULPTURAL
APPEARANCE TO INTERPRET THE
CONNOTATION OF MODERN BEAUTY
WHILE MAINTAINING THE ELEMENTS OF
ERGONOMIC THEORY



DETAILS

型号:3E环保棕垫

厚度:10(硬)

主材:3E环保棕两边款

白色针织布+灰色侧布

灰色3D底布

CRYSTALLIZATION OF INSPIRATION AND
CREATIVITY , IT USES A SCULPTURAL
APPEARANCE TO INTERPRET THE
CONNOTATION OF MODERN BEAUTY
WHILE MAINTAINING THE ELEMENTS OF
ERGONOMIC THEORY



DETAILS

型号:3E环保棕垫

厚度:10(硬)

主材:3E环保棕

布套款

金色4d布套+中拆

CRYSTALLIZATION OF INSPIRATION AND
CREATIVITY , IT USES A SCULPTURAL
APPEARANCE TO INTERPRET THE
CONNOTATION OF MODERN BEAUTY
WHILE MAINTAINING THE ELEMENTS OF
ERGONOMIC THEORY



DETAILS

型号:经典6D

厚度:19(适中)

主材:6D透气面料

全3D无胶水成型床芯
布套中拆、可水洗

CRYSTALLIZATION OF INSPIRATION AND
CREATIVITY , IT USES A SCULPTURAL
APPEARANCE TO INTERPRET THE
CONNOTATION OF MODERN BEAUTY
WHILE MAINTAINING THE ELEMENTS OF
ERGONOMIC THEORY



DETAILS

型号:祥云

厚度:29(适中)

主材:进口康菲特抗菌防螨面料

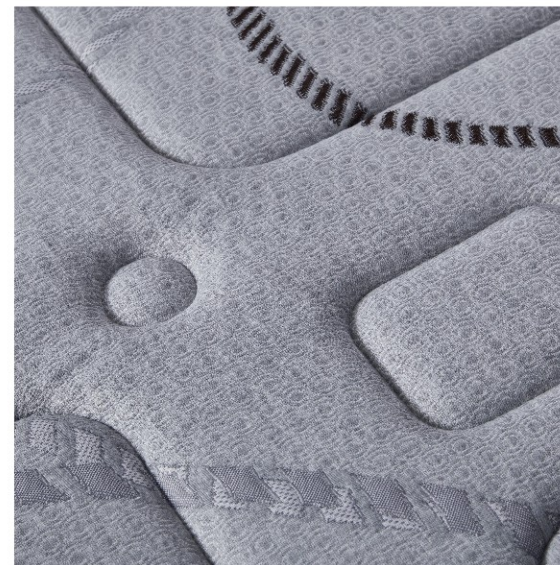
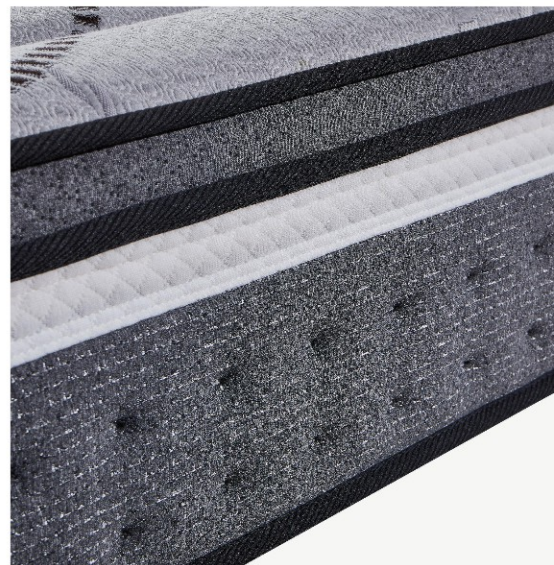
高回弹海棉+2分天然乳胶

1440 个Q弹迷你气泡簧+高密度海棉

五区静音独立袋弹簧+四周5公分加厚

海棉封边+底部采用透气3D网格布

CRYSTALLIZATION OF INSPIRATION AND
CREATIVITY , IT USES A SCULPTURAL
APPEARANCE TO INTERPRET THE
CONNOTATION OF MODERN BEAUTY
WHILE MAINTAINING THE ELEMENTS OF
ERGONOMIC THEORY



DETAILS

型号:伊甸园

厚度:27(适中)

主材:竹碳抑菌面料+泰国进口乳胶

静音独立袋弹簧

四周海棉加固封边工艺

CRYSTALLIZATION OF INSPIRATION AND
CREATIVITY , IT USES A SCULPTURAL
APPEARANCE TO INTERPRET THE
CONNOTATION OF MODERN BEAUTY
WHILE MAINTAINING THE ELEMENTS OF
ERGONOMIC THEORY



DETAILS

型号:企鹅

厚度:24(可选配睡感)

主材:全拆、外套可水洗设计

A 面清凉冰丝面料 /B面保暖绒布

支撑层：酷布抗氧化静音独立袋装
弹簧标配中硬舒适层：3D+代棕棉
或可根据客户需要任意选配以下两
种舒适层材料：乳胶(软)、凝胶
记忆棉(软)、3D(适中)

云氧波浪棉(适中)、环保棕(硬)
代棕棉(硬)

CRYSTALLIZATION OF INSPIRATION AND
CREATIVITY , IT USES A SCULPTURAL
APPEARANCE TO INTERPRET THE
CONNOTATION OF MODERN BEAUTY
WHILE MAINTAINING THE ELEMENTS OF
ERGONOMIC THEORY



DETAILS

型号:竹月

厚度:28(适中)

主材:比利时进口500克冰丝面料

高回弹海绵+2公分恒温记忆棉

2公分天然水洗乳胶+五区静音独

立袋弹簧+四周加厚海棉封边加固

底部采用透气3D网格布

CRYSTALLIZATION OF INSPIRATION AND
CREATIVITY , IT USES A SCULPTURAL
APPEARANCE TO INTERPRET THE
CONNOTATION OF MODERN BEAUTY
WHILE MAINTAINING THE ELEMENTS OF
ERGONOMIC THEORY



DETAILS

型号:智慧2021

厚度:28(软硬适中)

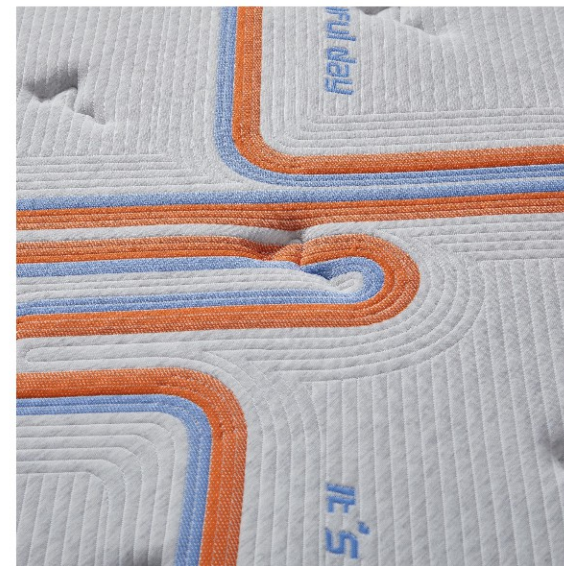
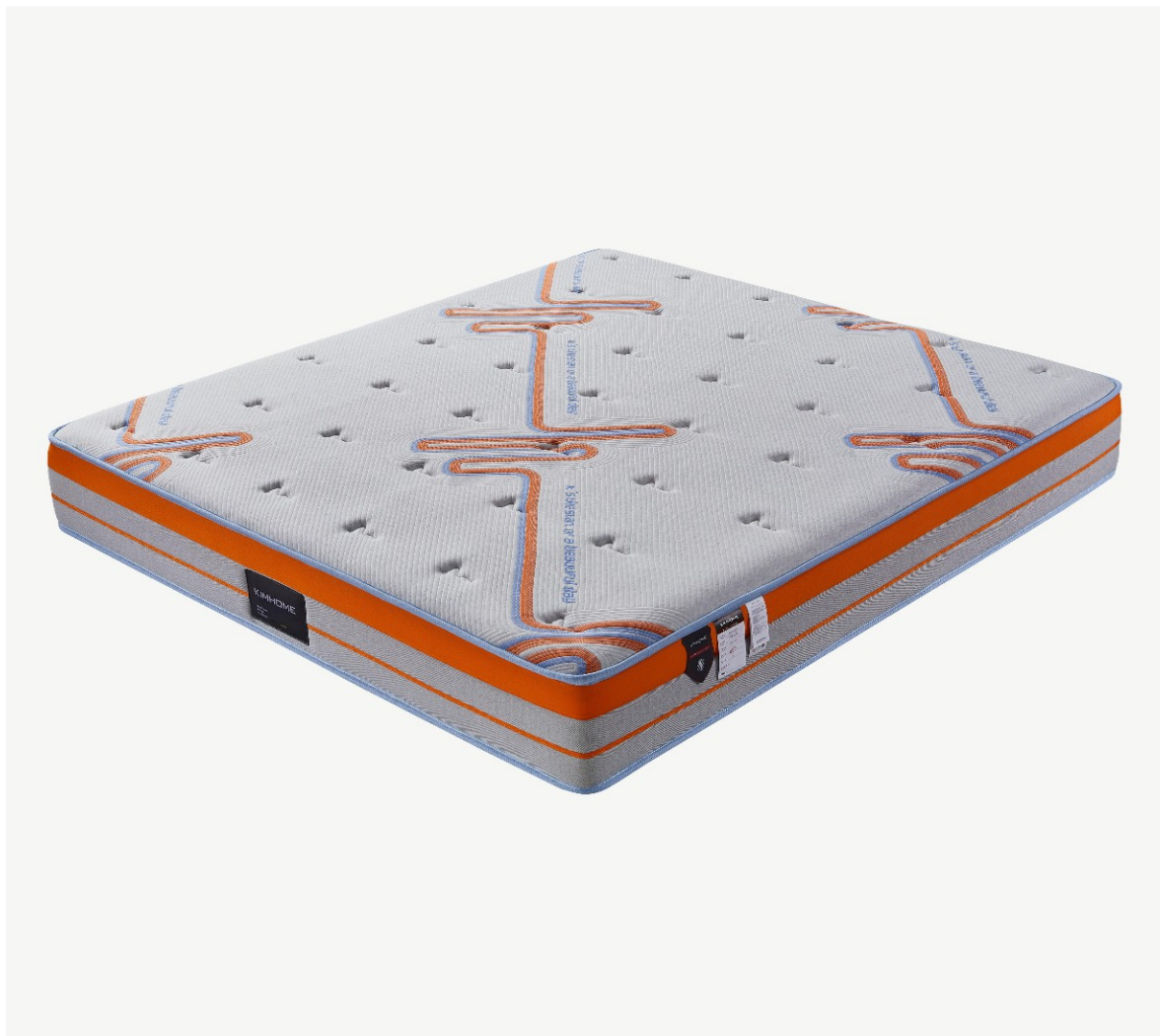
主材:高档双面提花针织面料

2分天然乳胶+2分护脊绵

2分有氧纤维棉+静音独立袋弹簧

四周海棉加固封边工艺

CRYSTALLIZATION OF INSPIRATION AND
CREATIVITY, IT USES A SCULPTURAL
APPEARANCE TO INTERPRET THE
CONNOTATION OF MODERN BEAUTY
WHILE MAINTAINING THE ELEMENTS OF
ERGONOMIC THEORY



DETAILS

型号:动感之星

厚度:25(适中)

主材:动感提花针织面料

1440 个Q弹迷你气泡簧

静音独立袋弹簧

四周海棉加固封边工艺

CRYSTALLIZATION OF INSPIRATION AND
CREATIVITY , IT USES A SCULPTURAL
APPEARANCE TO INTERPRET THE
CONNOTATION OF MODERN BEAUTY
WHILE MAINTAINING THE ELEMENTS OF
ERGONOMIC THEORY



DETAILS

型号:悠然岛

厚度:28(适中)

主材:420克环保纤维面料

高回弹海绵+2公分云氧波浪棉

2公分3D+五区静音独立袋弹簧

四周加厚海棉封边加固

底部采用透气3D网格布

CRYSTALLIZATION OF INSPIRATION AND
CREATIVITY , IT USES A SCULPTURAL
APPEARANCE TO INTERPRET THE
CONNOTATION OF MODERN BEAUTY
WHILE MAINTAINING THE ELEMENTS OF
ERGONOMIC THEORY



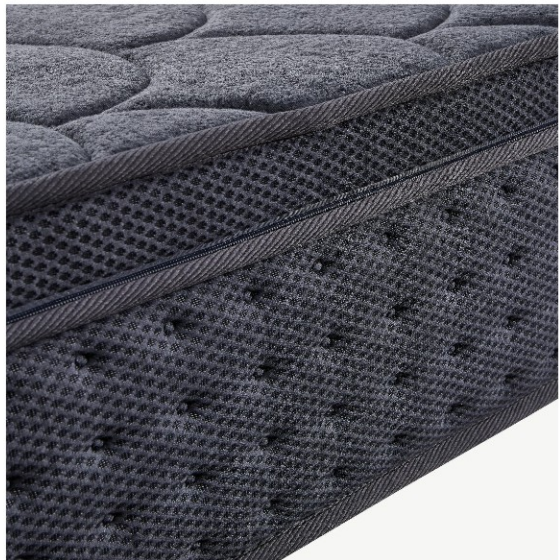
DETAILS

型号:猛狮2021

厚度:34(软硬适中)

主材:比利时进口冰丝面料,
2分天然乳胶+8分迷你独立簧
静音独立袋弹簧
四周海棉加固封边工艺

CRYSTALLIZATION OF INSPIRATION AND
CREATIVITY , IT USES A SCULPTURAL
APPEARANCE TO INTERPRET THE
CONNOTATION OF MODERN BEAUTY
WHILE MAINTAINING THE ELEMENTS OF
ERGONOMIC THEORY



DETAILS

型号:格拉

厚度:25(中硬)

主材:竹碳抑菌针织面料+2分乳胶

2分有氧代棕棉

五区静音独立袋弹簧

四周海棉加固封边工艺

CRYSTALLIZATION OF INSPIRATION AND
CREATIVITY, IT USES A SCULPTURAL
APPEARANCE TO INTERPRET THE
CONNOTATION OF MODERN BEAUTY
WHILE MAINTAINING THE ELEMENTS OF
ERGONOMIC THEORY



DETAILS

型号:爱丁堡

厚度:26(中软)

主材:羊绒面料+4分乳胶

五区静音独立袋弹簧

四周海棉加固封边工艺

CRYSTALLIZATION OF INSPIRATION AND
CREATIVITY , IT USES A SCULPTURAL
APPEARANCE TO INTERPRET THE
CONNOTATION OF MODERN BEAUTY
WHILE MAINTAINING THE ELEMENTS OF
ERGONOMIC THEORY



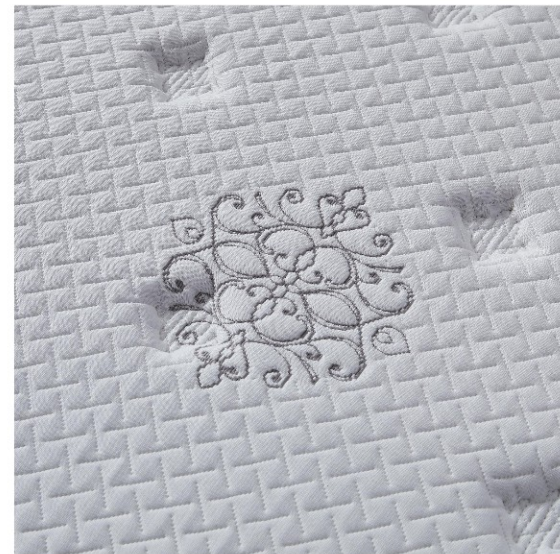
DETAILS

型号:冰美人

厚度:23(适中偏硬)

**主材:乌克兰进口抗静电理疗面料
2公分护脊棉+2公分环保棕
高碳锰钢大芯邦尼尔弹簧**

CRYSTALLIZATION OF INSPIRATION AND
CREATIVITY , IT USES A SCULPTURAL
APPEARANCE TO INTERPRET THE
CONNOTATION OF MODERN BEAUTY
WHILE MAINTAINING THE ELEMENTS OF
ERGONOMIC THEORY



DETAILS

型号:迈莎锐

厚度:28(中软)

主材:进口天丝面料+天然乳胶

1440个Q弹迷你气泡簧

静音独立袋弹簧

四周海棉加固封边工艺

CRYSTALLIZATION OF INSPIRATION AND
CREATIVITY , IT USES A SCULPTURAL
APPEARANCE TO INTERPRET THE
CONNOTATION OF MODERN BEAUTY
WHILE MAINTAINING THE ELEMENTS OF
ERGONOMIC THEORY



DETAILS

型号:奥斯曼诱惑

厚度:24(适中)

主材:进口康菲特诱惑面料

太空蓬松棉,

五区静音独立袋弹簧

四周海棉加固封边工艺

CRYSTALLIZATION OF INSPIRATION AND
CREATIVITY , IT USES A SCULPTURAL
APPEARANCE TO INTERPRET THE
CONNOTATION OF MODERN BEAUTY
WHILE MAINTAINING THE ELEMENTS OF
ERGONOMIC THEORY



DETAILS

型号:梦之缘

厚度:22(适中-睡感可调)

主材:天然棉床面料外套 +3公分天然乳胶

5 公分3D+3公分环保棕

8 公分护脊棉

CRYSTALLIZATION OF INSPIRATION AND
CREATIVITY , IT USES A SCULPTURAL
APPEARANCE TO INTERPRET THE
CONNOTATION OF MODERN BEAUTY
WHILE MAINTAINING THE ELEMENTS OF
ERGONOMIC THEORY



DETAILS

型号:夜巴黎

厚度:24(中软)

主材:五区静音独立袋装弹簧

3分乳胶+进口高密度超柔绒布
可拆洗

CRYSTALLIZATION OF INSPIRATION AND
CREATIVITY , IT USES A SCULPTURAL
APPEARANCE TO INTERPRET THE
CONNOTATION OF MODERN BEAUTY
WHILE MAINTAINING THE ELEMENTS OF
ERGONOMIC THEORY



DETAILS

型号:耶拿

厚度:22(软硬可调节)

主材:麻布面料+天然乳胶+3D

3E 环保棕+高温抗菌定型棉

CRYSTALLIZATION OF INSPIRATION AND
CREATIVITY , IT USES A SCULPTURAL
APPEARANCE TO INTERPRET THE
CONNOTATION OF MODERN BEAUTY
WHILE MAINTAINING THE ELEMENTS OF
ERGONOMIC THEORY



DETAILS

型号:芦荟

厚度:21(适中)

主材:芦荟针织面料

平衡耐磨环保棉

高碳锰钢大芯邦尼尔弹簧

CRYSTALLIZATION OF INSPIRATION AND
CREATIVITY, IT USES A SCULPTURAL
APPEARANCE TO INTERPRET THE
CONNOTATION OF MODERN BEAUTY
WHILE MAINTAINING THE ELEMENTS OF
ERGONOMIC THEORY



DETAILS

型号:KIM

厚度:24(适中)

主材:定制KIM抗起球针织面料
羊毛舒弹棉+静音独立袋弹簧
四周海棉加固封边工艺

CRYSTALLIZATION OF INSPIRATION AND
CREATIVITY , IT USES A SCULPTURAL
APPEARANCE TO INTERPRET THE
CONNOTATION OF MODERN BEAUTY
WHILE MAINTAINING THE ELEMENTS OF
ERGONOMIC THEORY



DETAILS

型号:JD166

厚度:22(适中)

主材:天鹅绒面料+抗菌防螨定型棉
高碳锰钢大芯邦尼尔弹簧

CRYSTALLIZATION OF INSPIRATION AND
CREATIVITY , IT USES A SCULPTURAL
APPEARANCE TO INTERPRET THE
CONNOTATION OF MODERN BEAUTY
WHILE MAINTAINING THE ELEMENTS OF
ERGONOMIC THEORY



DETAILS

型号:乐梦

厚度:22(偏硬)

主材:抗起球天丝面料+500克蓬松纤维
棉+2公分高回弹海绵+2公分3E环
保棕+2.3线高碳锰钢大芯邦尼尔
床网+平衡耐磨环保棉+四周海绵
封边工艺+底部采用透气3D网格布

CRYSTALLIZATION OF INSPIRATION AND
CREATIVITY, IT USES A SCULPTURAL
APPEARANCE TO INTERPRET THE
CONNOTATION OF MODERN BEAUTY
WHILE MAINTAINING THE ELEMENTS OF
ERGONOMIC THEORY



DETAILS

型号:航海家

厚度:22(适中偏硬)

主材:面拆+双面提花针织面料+防水
阻螨杜邦布+黄麻+高碳锰钢大
芯邦尼尔弹簧+无胶水环保生产工艺

CRYSTALLIZATION OF INSPIRATION AND
CREATIVITY , IT USES A SCULPTURAL
APPEARANCE TO INTERPRET THE
CONNOTATION OF MODERN BEAUTY
WHILE MAINTAINING THE ELEMENTS OF
ERGONOMIC THEORY



DETAILS

型号:法尔克

厚度:26(中软)

主材:竹碳抑菌针织面料 +4分高温
定型抗菌棉+3D五区静音独立
袋弹簧+四周海棉加固封边工艺

CRYSTALLIZATION OF INSPIRATION AND
CREATIVITY , IT USES A SCULPTURAL
APPEARANCE TO INTERPRET THE
CONNOTATION OF MODERN BEAUTY
WHILE MAINTAINING THE ELEMENTS OF
ERGONOMIC THEORY



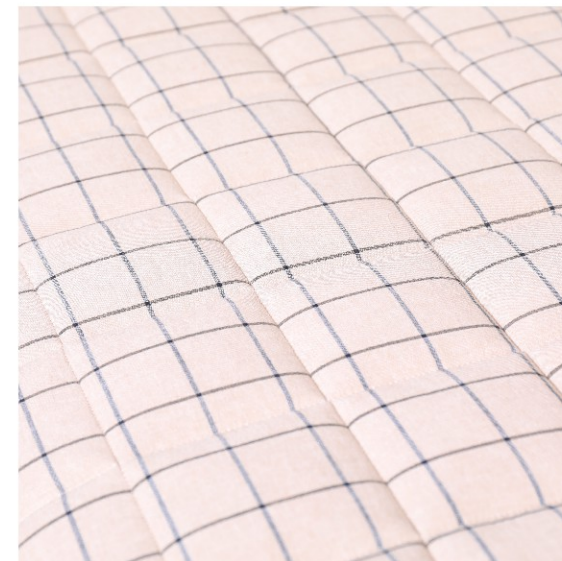
DETAILS

型号:赛力斯

厚度:23(适中)

主材:艾草抗菌纤维面料+天然乳胶
抗菌棉+静音独立袋弹簧
四周海棉加固封边工艺

CRYSTALLIZATION OF INSPIRATION AND
CREATIVITY , IT USES A SCULPTURAL
APPEARANCE TO INTERPRET THE
CONNOTATION OF MODERN BEAUTY
WHILE MAINTAINING THE ELEMENTS OF
ERGONOMIC THEORY



DETAILS

型号: 清新卡其

厚度 25(适中)

主材: 棉质可拆手工外套2公分羊毛舒弹丝
3D透气材料酷布独立袋装弹簧
大豆纤维内套, 布套全拆

CRYSTALLIZATION OF INSPIRATION AND
CREATIVITY ,IT USES A SCULPTURAL
APPEARANCE TO INTERPRET THE
CONNOTATION OF MODERN BEAUTY
WHILE MAINTAINING THE ELEMENTS OF
ERGONOMIC THEORY



DETAILS

型号: 舒云

厚度 23(中软)

主材: 面料: 柔感棉麻面料, 3D凉席面料
(冬夏两用, 可互调)

内部: 2公分杜邦Q弹棉,
2公分天然乳胶,
双层酷布独立袋

CRYSTALLIZATION OF INSPIRATION AND
CREATIVITY, IT USES A SCULPTURAL
APPEARANCE TO INTERPRET THE
CONNOTATION OF MODERN BEAUTY
WHILE MAINTAINING THE ELEMENTS OF
ERGONOMIC THEORY



DETAILS

型号: 缔梦

厚度: 25(中软)

主材: 牛奶风拼色, 2公分羊毛舒弹丝
3公分迷你汽泡簧, 酷布独立袋弹簧
硬质高泡海棉围边, 布套全拆

CRYSTALLIZATION OF INSPIRATION AND
CREATIVITY , IT USES A SCULPTURAL
APPEARANCE TO INTERPRET THE
CONNOTATION OF MODERN BEAUTY
WHILE MAINTAINING THE ELEMENTS OF
ERGONOMIC THEORY



DETAILS

型号: 纯姿

厚度: 25(中硬)

主材: 酷布独立袋弹簧

下层进口清凉冰丝面料,
硬质高泡海棉围边,布套全拆
冬夏两用,上层车前草麻布面料
2公分波浪云氧棉 2公分手工驼毛

CRYSTALLIZATION OF INSPIRATION AND
CREATIVITY , IT USES A SCULPTURAL
APPEARANCE TO INTERPRET THE
CONNOTATION OF MODERN BEAUTY
WHILE MAINTAINING THE ELEMENTS OF
ERGONOMIC THEORY



DETAILS

型号: 梦境

厚度: 25(硬)

主材: 浅色千鸟格麻布 2公分3D
2公分黄麻 酷布独立袋弹簧
硬质高泡海绵围边
布套全拆

CRYSTALLIZATION OF INSPIRATION AND
CREATIVITY , IT USES A SCULPTURAL
APPEARANCE TO INTERPRET THE
CONNOTATION OF MODERN BEAUTY
WHILE MAINTAINING THE ELEMENTS OF
ERGONOMIC THEORY



DETAILS

型号: 诺蓝

厚度: 24(适中)

主材: 蓝格子麻布 2公分亲水棉
2公分波浪云氧棉 酷布独立袋弹簧
硬质高泡海棉围边,布套全拆

CRYSTALLIZATION OF INSPIRATION AND
CREATIVITY ,IT USES A SCULPTURAL
APPEARANCE TO INTERPRET THE
CONNOTATION OF MODERN BEAUTY
WHILE MAINTAINING THE ELEMENTS OF
ERGONOMIC THEORY



DETAILS

型号: 轻氧

厚度: 25(中软)

主材: 冬夏两用，上层树叶蝴蝶麻布面料
下层进口清凉冰丝面料2公分太空TPE
2公分杜邦Q弹棉，酷布独立袋弹簧
硬质高泡海棉围边，布套全拆

CRYSTALLIZATION OF INSPIRATION AND
CREATIVITY , IT USES A SCULPTURAL
APPEARANCE TO INTERPRET THE
CONNOTATION OF MODERN BEAUTY
WHILE MAINTAINING THE ELEMENTS OF
ERGONOMIC THEORY



DETAILS

型号: 舒缓

厚度: 24(中软)

主材: 细麻纯米色面料 2公分杜邦Q弹棉
2公分有机硅水洗空气棉 酷布独立袋弹簧
硬质高泡海棉围边,布套全拆

CRYSTALLIZATION OF INSPIRATION AND
CREATIVITY ,IT USES A SCULPTURAL
APPEARANCE TO INTERPRET THE
CONNOTATION OF MODERN BEAUTY
WHILE MAINTAINING THE ELEMENTS OF
ERGONOMIC THEORY



DETAILS

型号: 云朵

厚度: 25(中软)

主材: A类母婴级纯棉华夫格面料

2公分凝胶记忆棉, 3公分迷你汽泡簧
酷布独立袋弹簧, 硬质高泡海绵围边
布套全拆

CRYSTALLIZATION OF INSPIRATION AND
CREATIVITY, IT USES A SCULPTURAL
APPEARANCE TO INTERPRET THE
CONNOTATION OF MODERN BEAUTY
WHILE MAINTAINING THE ELEMENTS OF
ERGONOMIC THEORY



DETAILS

型号: 爱丽丝

厚度: 23(中硬)

主材: 四周海绵封边工艺，
400克银离子抗菌面料，
底部采用透气3D网格布，
天然水洗乳胶，零甲醇黄麻，
2.3线3.5芯高碳锰钢大芯邦尼尔床网

CRYSTALLIZATION OF INSPIRATION AND
CREATIVITY , IT USES A SCULPTURAL
APPEARANCE TO INTERPRET THE
CONNOTATION OF MODERN BEAUTY
WHILE MAINTAINING THE ELEMENTS OF
ERGONOMIC THEORY



DETAILS

型号: 水立方

厚度: 20(中硬)

主材: 6D透气全拆洗绗缝外套，
内芯采用8层2公分1450克3D材料
布套中拆

CRYSTALLIZATION OF INSPIRATION AND
CREATIVITY , IT USES A SCULPTURAL
APPEARANCE TO INTERPRET THE
CONNOTATION OF MODERN BEAUTY
WHILE MAINTAINING THE ELEMENTS OF
ERGONOMIC THEORY



DETAILS

型号: 索菲亚

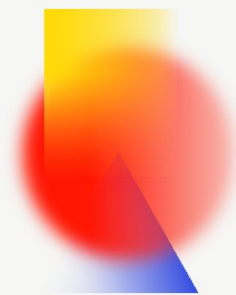
厚度: 26(适中)

主材: 无线遥控电动升降床垫

可选配语音控制加450,
律动按摩功能加580

材质: 比利时进口冰丝面料,
3公分透气棉, 5公分高回弹绵,
5公分护脊支撑绵, 13公分电动折叠升降床芯

CRYSTALLIZATION OF INSPIRATION AND
CREATIVITY... IT USES A SCULPTURAL
APPEARANCE TO INTERPRET THE
CONNOTATION OF MODERN BEAUTY.
WHILE MAINTAINING THE ELEMENTS OF
ERGONOMIC THEORY.



THANK YOU

谢谢观看